

# KEY MAP NORTH

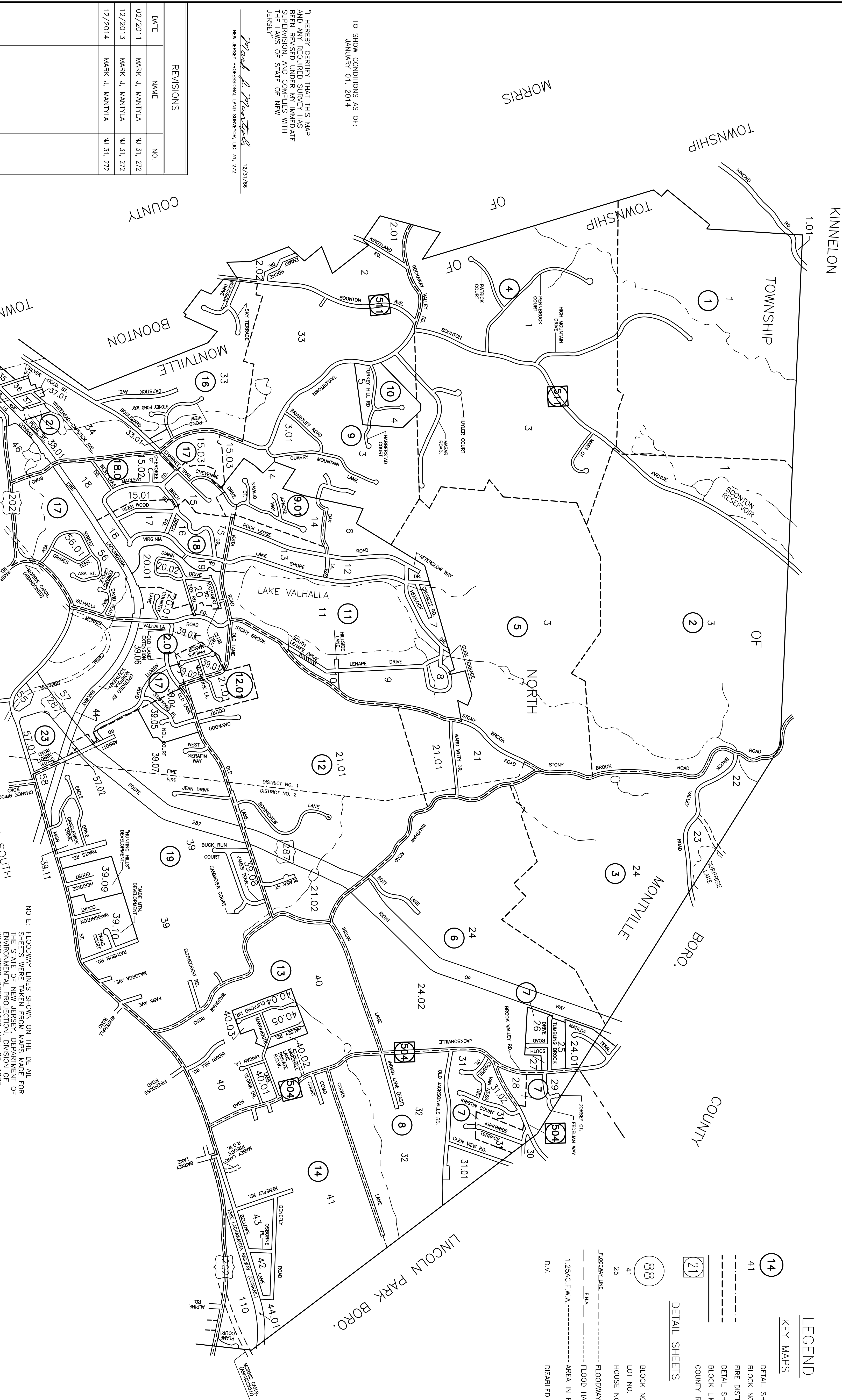
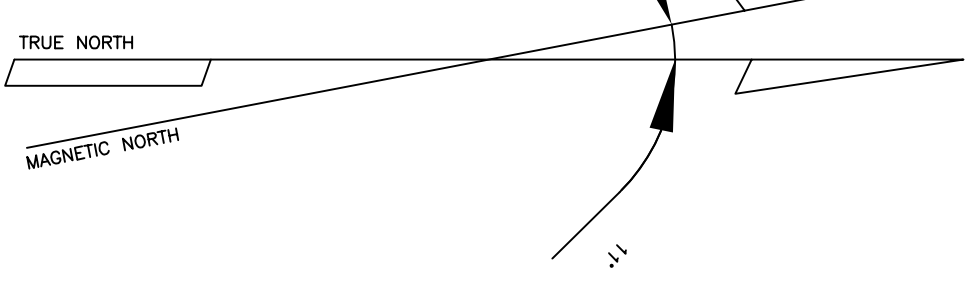
## LEGEND

### KEY MAPS

- 14 DETAIL SHEET NO.
- 41 BLOCK NO.
- FIRE DISTRICT
- DETAIL SHEET LIMIT
- BLOCK LIMIT
- COUNTY ROAD SYMBOL

### DETAIL SHEETS

- 88 BLOCK NO.
- 41 LOT NO.
- 25 HOUSE NO.
- 1.25%AC F.W.A. FLOODWAY LINE
- AREA IN FLOODWAY
- DISABLED VETERAN



TO SHOW CONDITIONS AS OF:  
JANUARY 01, 2014

I HEREBY CERTIFY THAT THIS MAP AND ANY REQUIRED SURVEY HAS BEEN PREPARED AND SUPERVISED IN ACCORDANCE WITH THE LAWS OF STATE OF NEW JERSEY

*Mark J. Mantyla*  
NEW JERSEY PROFESSIONAL LAND SURVEYOR, L.C. 31, 272 12/21/08

REVISIONS		
DATE	NAME	NO.
02/2011	MARK J. MANTYLA	NU 31, 272
12/2013	MARK J. MANTYLA	NU 31, 272
12/2014	MARK J. MANTYLA	NU 31, 272

REVISED: 1984  
LEONARD H. GREENFIELD & ASSOCIATES  
Professional Land Surveyor & Planner  
250 Myrtle Avenue  
Boonton, N.J. 07003

REV. 1963, 1971, 1973, 1975, 1976, 1982  
STEPHEN A. JEROMEK  
Licensed Professional Planner & Land Surveyor  
Montville, N.J. 07085

THIS TAX MAP WAS DIGITIZED FROM A SCAN OF THE PLYER DRAWING, SUBSEQUENTLY AMENDED AND ON FILE IN THE MONTVILLE TOWNSHIP ENGINEERING OFFICE.  
MARK J. MANTYLA  
PROFESSIONAL LAND SURVEYOR  
NJ LICENSE #A8031272

THE INFORMATION SHOWN ON THIS MAP IS DERIVED FROM GROUND AND AERIAL PHOTOGRAPHY AND FIELD SURVEYS. THE MAP IS TO BE USED FOR ASSESSMENT PURPOSES ONLY.  
THIS MAP SUPERSEDES THE TAX MAP APPROVED APRIL 12, 1977

NOTE: FLOODWAY LINES SHOWN ON THE DETAIL SHEETS OF THIS MAP ARE BASED ON THE STATE OF NEW JERSEY DEPARTMENT OF ENVIRONMENTAL PROTECTION, DIVISION OF WATER RESOURCES, DATED NOV. 22, 1977. NO RESPONSIBILITY FOR THE ACCURACY OF THESE LINES IS ASSUMED BY THE PERSON REVISING THIS MAP.

I HEREBY CERTIFY THAT THIS MAP AND ANY REQUIRED SURVEY HAS BEEN PREPARED AND SUPERVISED IN ACCORDANCE WITH THE LAWS OF THE STATE OF NEW JERSEY.  
*Richard P. Browne*  
NEW J.S.L.C. 23939

NEW JERSEY DEPARTMENT OF THE TREASURY  
APPROVED AS A TAX MAP PURSUANT TO THE PROVISIONS OF CHAPTER 175, LAWS OF 1973  
DATE: APR 22 1959 SERIAL NO. 239

NEW JERSEY DEPARTMENT OF THE TREASURY  
LOCAL PROSPECT DIVISION OF PLANNING BRANCH  
APPROVED AS A TAX MAP PURSUANT TO THE PROVISIONS OF CHAPTER 175, LAWS OF 1973, FOR THE DISTRICT OF MONTVILLE  
DATE: JUN 22 1982 SERIAL NO. 609

NEW JERSEY DEPARTMENT OF THE TREASURY  
LOCAL PROSPECT DIVISION OF PLANNING BRANCH  
APPROVED AS A TAX MAP PURSUANT TO THE PROVISIONS OF CHAPTER 175, LAWS OF 1973, FOR THE DISTRICT OF MONTVILLE  
DATE: APR 12 1977 SERIAL NO. 563

**KEY MAP  
NORTH**  
MONTVILLE TWP. TAX MAP  
MORRIS COUNTY  
SCALE 1" = 1000'  
APRIL 1959  
AERO SERVICE CORPORATION  
PHILADELPHIA, PA.