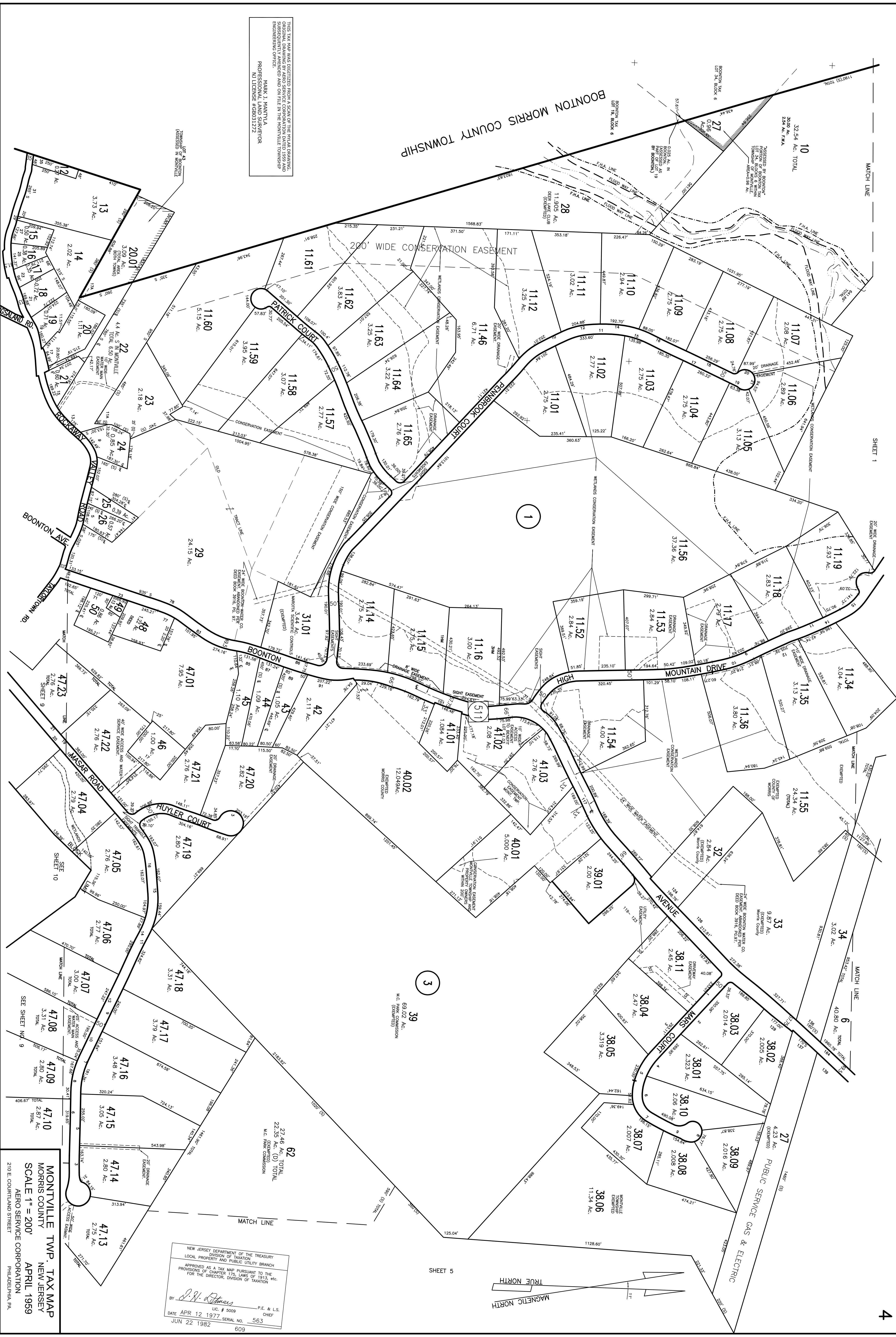


BOONTON MORRIS COUNTY TOWNSHIP

THIS TAX MAP WAS DIGITIZED FROM A SCAN OF THE ORIGINAL DRAWING. ORIGINAL DRAWING BY AERO SERVICE CORPORATION DATED 1959 AND 1969. THIS TAX MAP WAS PREPARED BY THE MORRIS COUNTY ENGINEERING OFFICE.
MARK J. MANTUVA
PROFESSIONAL LAND SURVEYOR
NJ LICENSE #98031272

REVISIONS: 1986, 1987, 1988, 1989, 1990, 1991, 1992, 1993, 1994, 1995, 1997, 1998, 2000, 2003, 2005, 2011, 2014
MARK J. MANTUVA
PROFESSIONAL LAND SURVEYOR #31272
MONTVILLE TOWNSHIP ENGINEERING DEPT.
MONTVILLE, N.J. 07045



NEW JERSEY DEPARTMENT OF THE TREASURY
DIVISION OF TAXATION
LOCAL PROPERTY AND PUBLIC UTILITY BRANCH
APPROVED AS A TAX MAP PURSUANT TO THE
PROVISIONS OF CHAPTER 122, LAWS OF 1913, etc.
FOR THE DIRECTOR, DIVISION OF TAXATION
BY *J.M. Mantuva*
LIC. # 5009 P.E. & L.S. CHIEF
DATE APR 12 1977 SERIAL NO. 563
JUN 22 1982

MONTVILLE TWP. TAX MAP
MORRIS COUNTY
NEW JERSEY
SCALE 1" = 200'
APRIL 1959
AERO SERVICE CORPORATION
PHILADELPHIA, PA.

REVISIONS: 1984 (TWRH)
LEONARD H. GREENFIELD & ASSOCIATES
Professional Land Surveyor & Planner
236 Myrtle Avenue
Boonton, N.J. 07005
REV. 1983, 1985, 1988, 1972, 1975, 1976, 1982
Stephen A. Jaramick Licensed
Professional Planner & Land Surveyor
Montville, N.J. 07045