

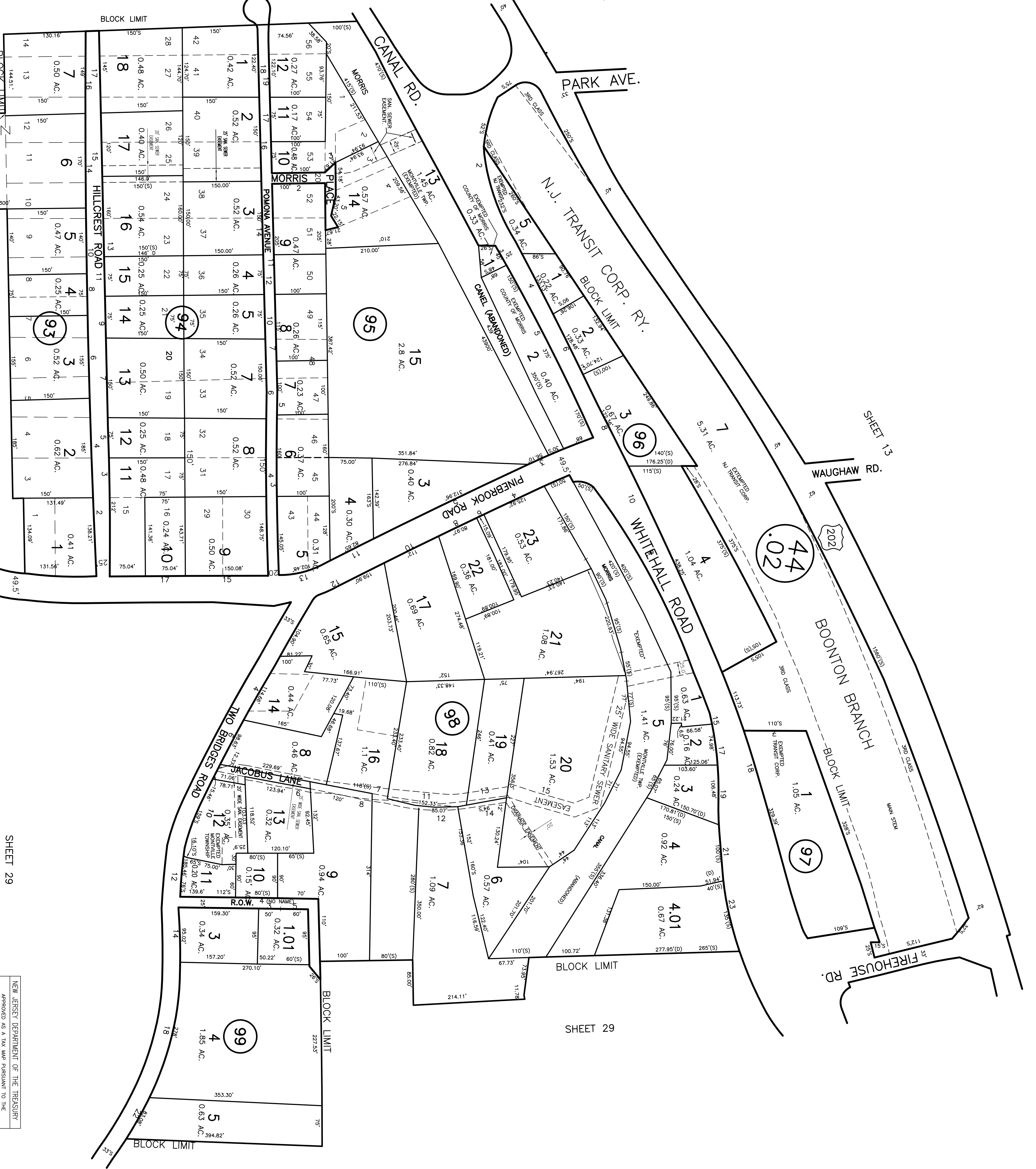
THIS TAX MAP WAS DIGITIZED FROM A SCAN OF THE TAX MAP DRAWING.
 ORIGINAL DRAWING BY AERO SERVICE CORPORATION DATED 1999
 AND SUBSEQUENTLY AMENDED AND ON FILE IN THE MONTVILLE
 TOWNSHIP ENGINEERING DEPT.
 MAP NO. 1 MONTVILLE
 PROFESSIONAL LAND SURVEYOR
 NJ LICENSE #68031272

SHEET 27

SHEET 19

SHEET 13

SHEET 29



SHEET 29

NEW JERSEY DEPARTMENT OF THE TREASURY
 APPROVED AS A TAX MAP PURSUANT TO THE
 PROVISIONS OF CHAPTER 175, LAWS OF 1913
 BY: *[Signature]*
 DATE: APR 22, 1992, SERIAL NO. 239
 SITE SUPERVISOR

NEW JERSEY DEPARTMENT OF THE TREASURY
 LOCAL PROPERTY AND PUBLIC UTILITY BRANCH
 APPROVED AS A TAX MAP PURSUANT TO THE
 PROVISIONS OF CHAPTER 175, LAWS OF 1913, N.J.
 FOR THE SECTION, DIVISION OF TAXATION
 BY: *[Signature]* P.E. & L.S. CHIEF
 DATE: APR 12, 1977, SERIAL NO. 563
 JUN 22, 1982 609

MONTVILLE TWP. TAX MAP
MORRIS COUNTY
NEW JERSEY
APRIL 1999
AERO SERVICE CORPORATION
 210 E. COURTLAND STREET
 PHILADELPHIA, PA.

REVISED: 1986, 1987, 1988, 1989, 1990, 1991, 1992, 1993, 1994, 1995, 1996, 2003, 2010, 2011, 2014
 MARK L. MONTVILLE, LAND SURVEYOR #31,272
 MONTVILLE TOWNSHIP ENGINEERING DEPT.
 MONTVILLE, N.J. 07045

REVISED: 1984
 William R. Harner
 Professional Land Surveyor
 Montville Township Engineering Dept.
 Montville, N.J. 07045

Stephen J. Darnack
 Professional Planner & Land Surveyor
 Montville, N.J. 07045

REVISED: 1970, 1972, 1975, 1976, 1982
 28