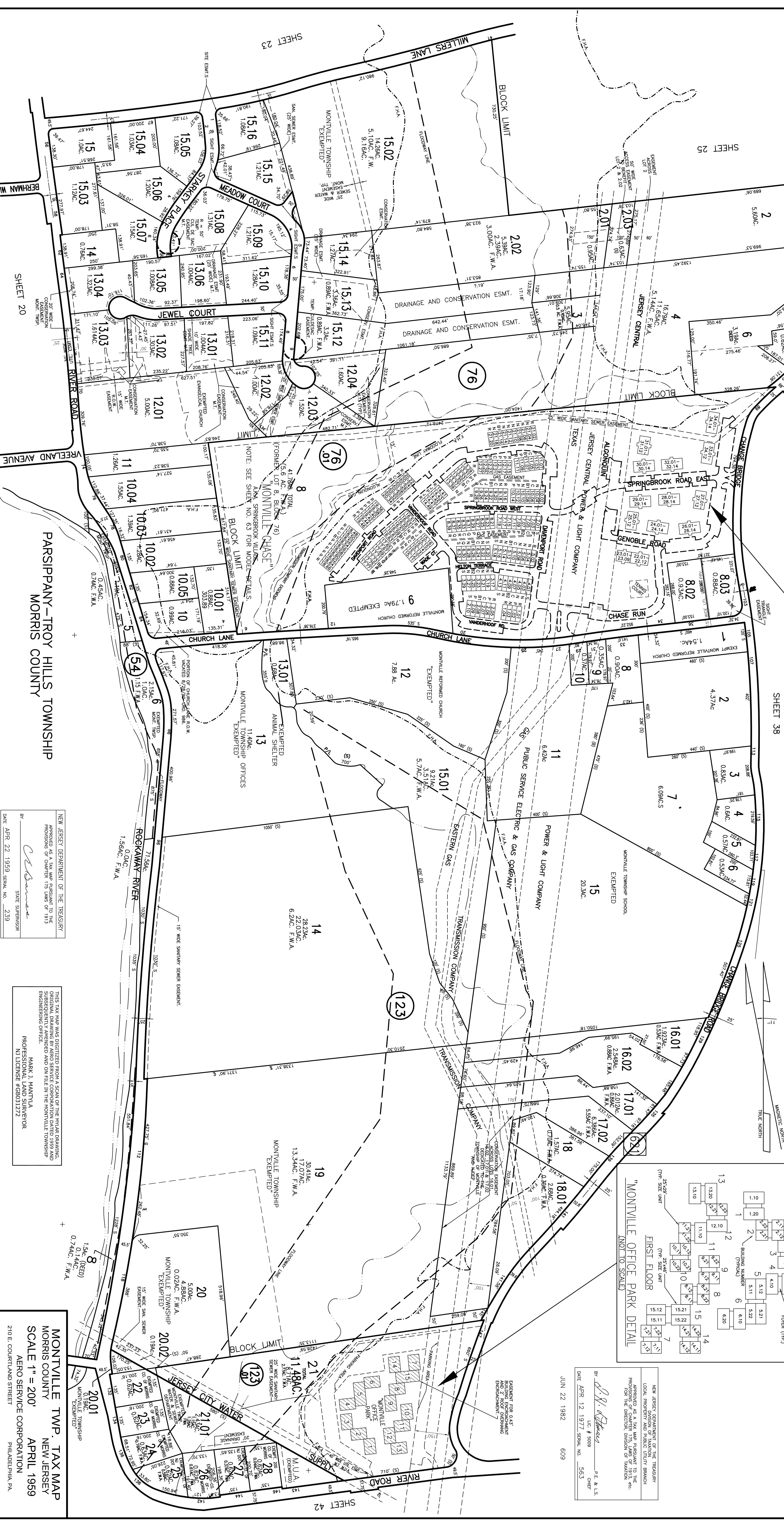


NEW JERSEY DEPARTMENT OF THE TREASURY
LOCAL PROPERTY AND PUBLIC UTILITY BRANCH
APPROVED AS A TAX MAP PURSUANT TO THE
PROVISIONS OF N.J.S.A. 17:27 AND 17:28, ETC.
FOR THE DIRECTOR, DIVISION OF TAXATION, ETC.

DATE: APR. 12, 1977. SERIAL NO. 563

BR: *[Signature]* P.E. & L.S.

JUN 22 1992 609



NEW JERSEY DEPARTMENT OF THE TREASURY
APPROVED AS A TAX MAP PURSUANT TO THE
PROVISIONS OF N.J.S.A. 17:27 AND 17:28, ETC.
FOR THE DIRECTOR, DIVISION OF TAXATION, ETC.

DATE: APR. 22, 1959. SERIAL NO. 239

BR: *[Signature]* STATE SUPERVISOR

THIS TAX MAP WAS DIGITIZED FROM A SCAN OF THE ORIGINAL DRAWING.
SIGNATURE DRAWING BY AND SERVICE CORPORATION DATED 1992 AND
APPROVED BY THE BOARD OF SUPERVISORS OF THE MONTVILLE TOWNSHIP
ENGINEERING OFFICE.

MARK J. MANTYLA
PROFESSIONAL LAND SURVEYOR
NJ LICENSE #GB031272

REV: 1982 Warren R. Hamer
Professional Planner & Surveyor
Montville Township Engineering Dept.
Montville, N.J. 07005

REV: 1983, 1970, 1973, 1975, 1976, 1982 Stephen A. Jaramchak
Professional Planner & Surveyor
Montville, N.J. 07005

MONTVILLE TWP. TAX MAP
MORRIS COUNTY
SCALE 1" = 200'
APRIL 1959
AERO SERVICE CORPORATION
PHILADELPHIA, PA.

REVIEWED/REVISED: 1988, 1987, 1988, 1989, 1991, 1992, 1993, 1994, 1995, 1997, 1998, 2000, 2003, 2005, 2008, 2011, 2014
PROFESSIONAL LAND SURVEYOR #31,272
MONTVILLE TOWNSHIP ENGINEERING DEPT.
MONTVILLE, N.J. 07005