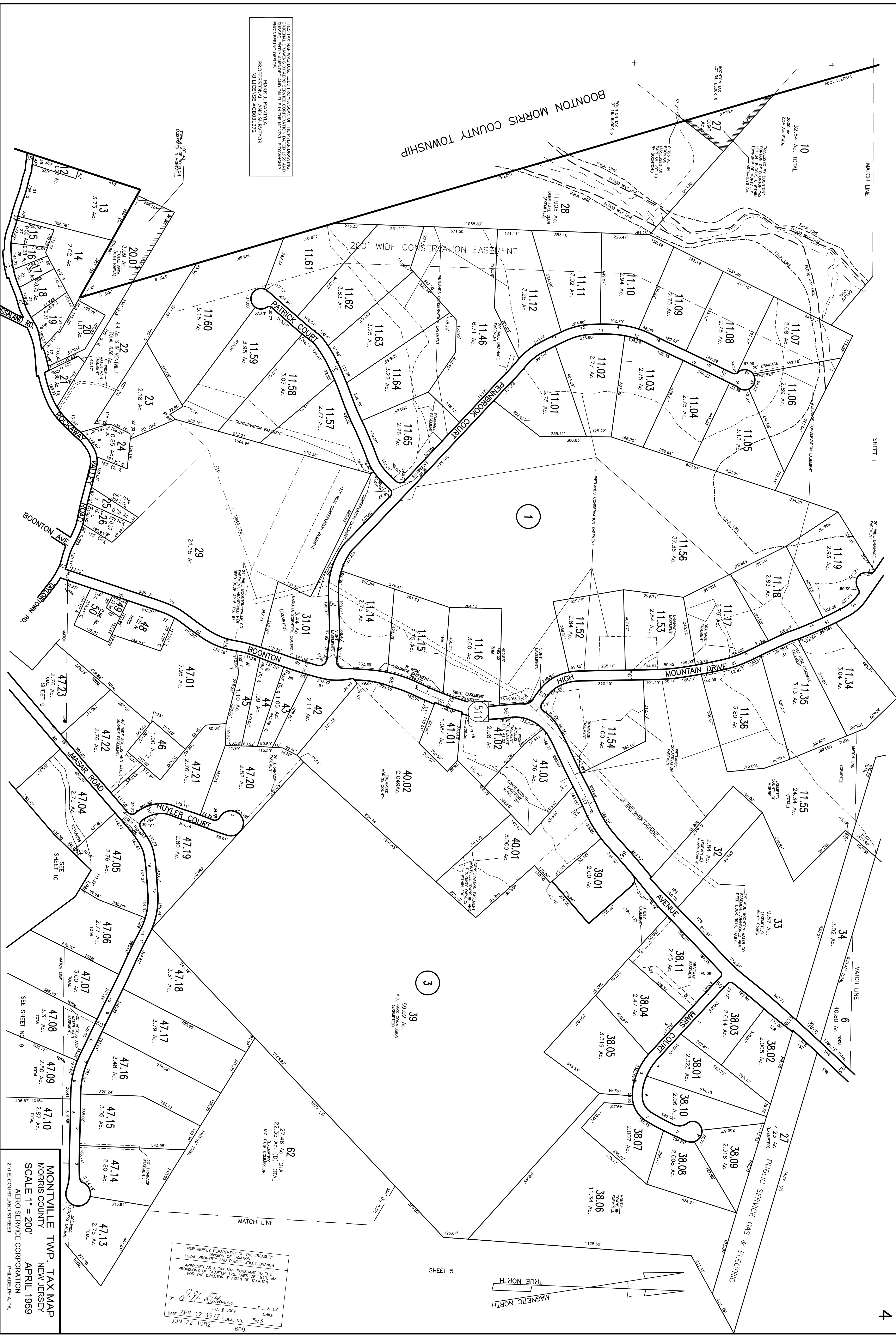


BOONTON MORRIS COUNTY TOWNSHIP

THIS TAX MAP WAS DIGITIZED FROM A SCAN OF THE ORIGINAL DRAWING. ORIGINAL DRAWING BY AERO SERVICE CORPORATION DATED 1959 AND REVISIONS BY AERO SERVICE CORPORATION AND BOONTON MORRIS COUNTY ENGINEERING OFFICE.
MARK J. MANTULA
PROFESSIONAL LAND SURVEYOR
NJ LICENSE #98031272

REVISIONS: 1986, 1987, 1988, 1989, 1990, 1991, 1992, 1993, 1994, 1995, 1997, 1998, 2000, 2003, 2005, 2011, 2014
MARK J. MANTULA
PROFESSIONAL LAND SURVEYOR #31272
BOONTON MORRIS COUNTY ENGINEERING DEPT.
MONTVILLE, N.J. 07045



NEW JERSEY DEPARTMENT OF THE TREASURY
DIVISION OF TAXATION
LOCAL PROPERTY AND PUBLIC UTILITY BRANCH
APPROVED AS A TAX MAP PURSUANT TO THE
PROVISIONS OF CHAPTER 122, LAWS OF 1913, etc.
FOR THE DIRECTOR, DIVISION OF TAXATION
BY *J.M. Mantula*
P.E. & L.S. LIC. # 5009
DATE APR 12 1977, SERIAL NO. 563
JUN 22 1982

REVISIONS: 1984 (TWRH)
LEONARD H. GREENFIELD & ASSOCIATES
Professional Land Surveyor & Planner
236 Myrtle Avenue
Boonton, N.J. 07005
REV. 1983, 1985, 1988, 1972, 1975, 1976, 1982
Stephen A. Jaramick
Licensed
Professional Planner & Land Surveyor
Montville, N.J. 07045

MONTVILLE TWP. TAX MAP
MORRIS COUNTY
NEW JERSEY
SCALE 1" = 200'
APRIL 1959
AERO SERVICE CORPORATION
PHILADELPHIA, PA.