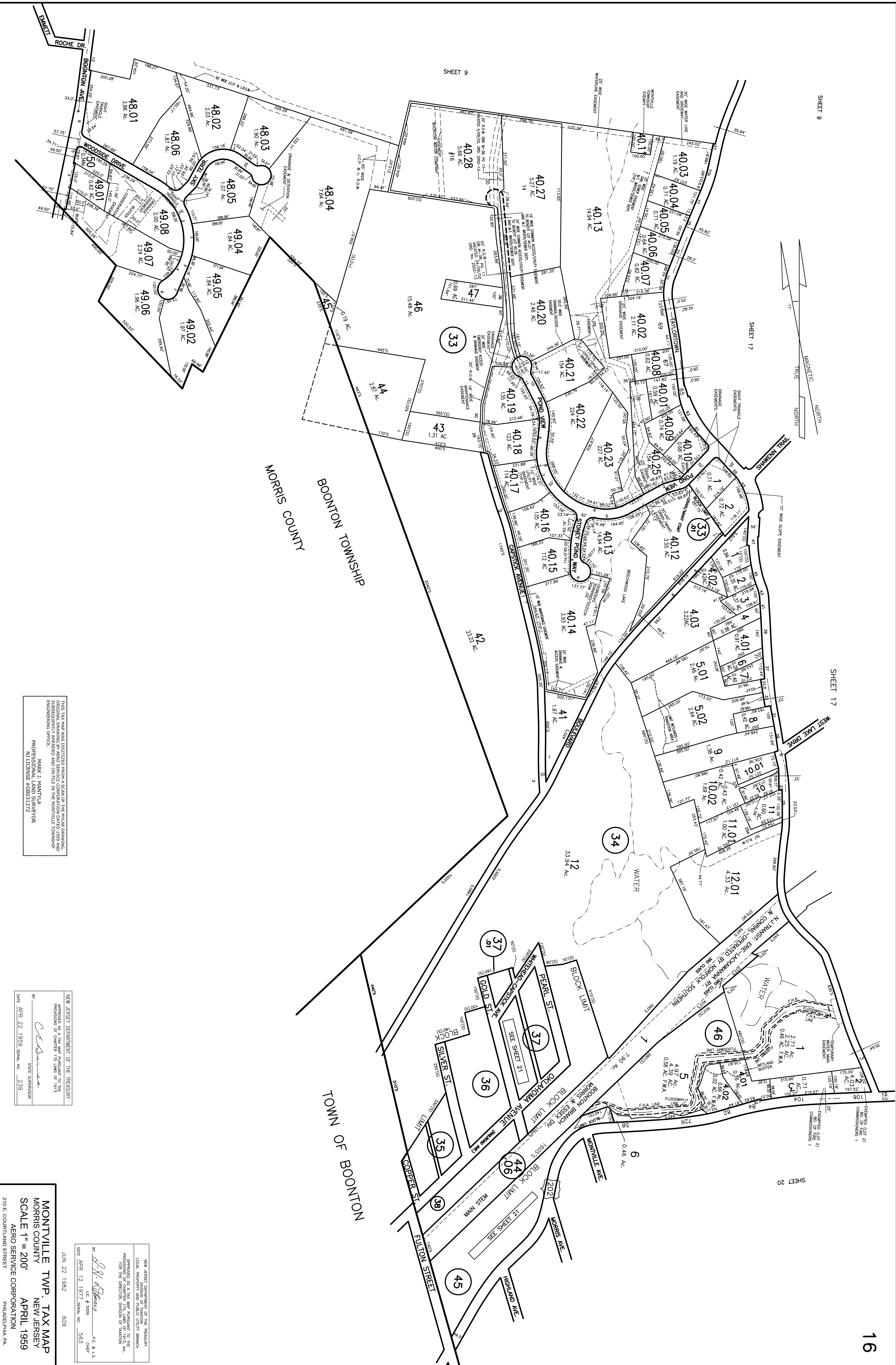


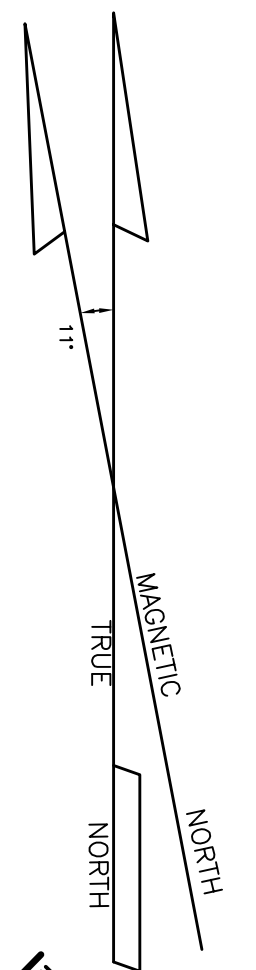
SHEET 9

SHEET 17

SHEET 20



SHEET 9



THIS TAX MAP WAS DIGITIZED FROM A SCANS OF THE ORIGINAL DRAWING. SUBSEQUENTLY AMENDED AND ON FILE IN THE MONTVILLE TOWNSHIP ENGINEERING OFFICE.

MARK J. MAANTYLA  
PROFESSIONAL LAND SURVEYOR  
NJ LICENSE #58031272

NEW JERSEY DEPARTMENT OF THE TREASURY  
APPROVED AS A TAX MAP PURSUANT TO THE PROVISIONS OF CHAPTER 175 LAWS OF 1913

DATE APR 22 1959 SERIAL NO. 239

NEW JERSEY DEPARTMENT OF THE TREASURY  
LOCAL PROPERTY AND PUBLIC UTILITY BRANCH  
APPROVED AS A TAX MAP PURSUANT TO THE PROVISIONS OF CHAPTER 175 LAWS OF 1913 FOR THE DIRECTOR, DIVISION OF TAXATION

DATE APR 12 1977 SERIAL NO. 563

MONTVILLE TWP. TAX MAP  
MORRIS COUNTY  
SCALE 1" = 200'  
AERO SERVICE CORPORATION  
210 E. COURTLAND STREET  
PHILADELPHIA, PA.

REVIEWED/REVISED: 1986, 1987, 1988, 1989, 1990, 1991, 1992, 1993, 1994, 1995, 1996, 1997, 1999, 2000, 2003, 2004, 2011, 2014

MARK J. MAANTYLA  
PROFESSIONAL LAND SURVEYOR #31,272  
MONTVILLE TOWNSHIP ENGINEERING DEPT.  
MONTVILLE, N.J. 07005

REV: 1984  
Warren R. Hanger  
Professional Land Surveyor  
Montville Township Engineering Dept.  
Montville, N.J. 07005

REV: 1993, 1988, 1989, 1990, 1992, 1993, 1995, 1996, 1998  
Stephen A. Jannick  
Licensed  
Professional Planner & Land Surveyor  
Montville, N.J. 07005