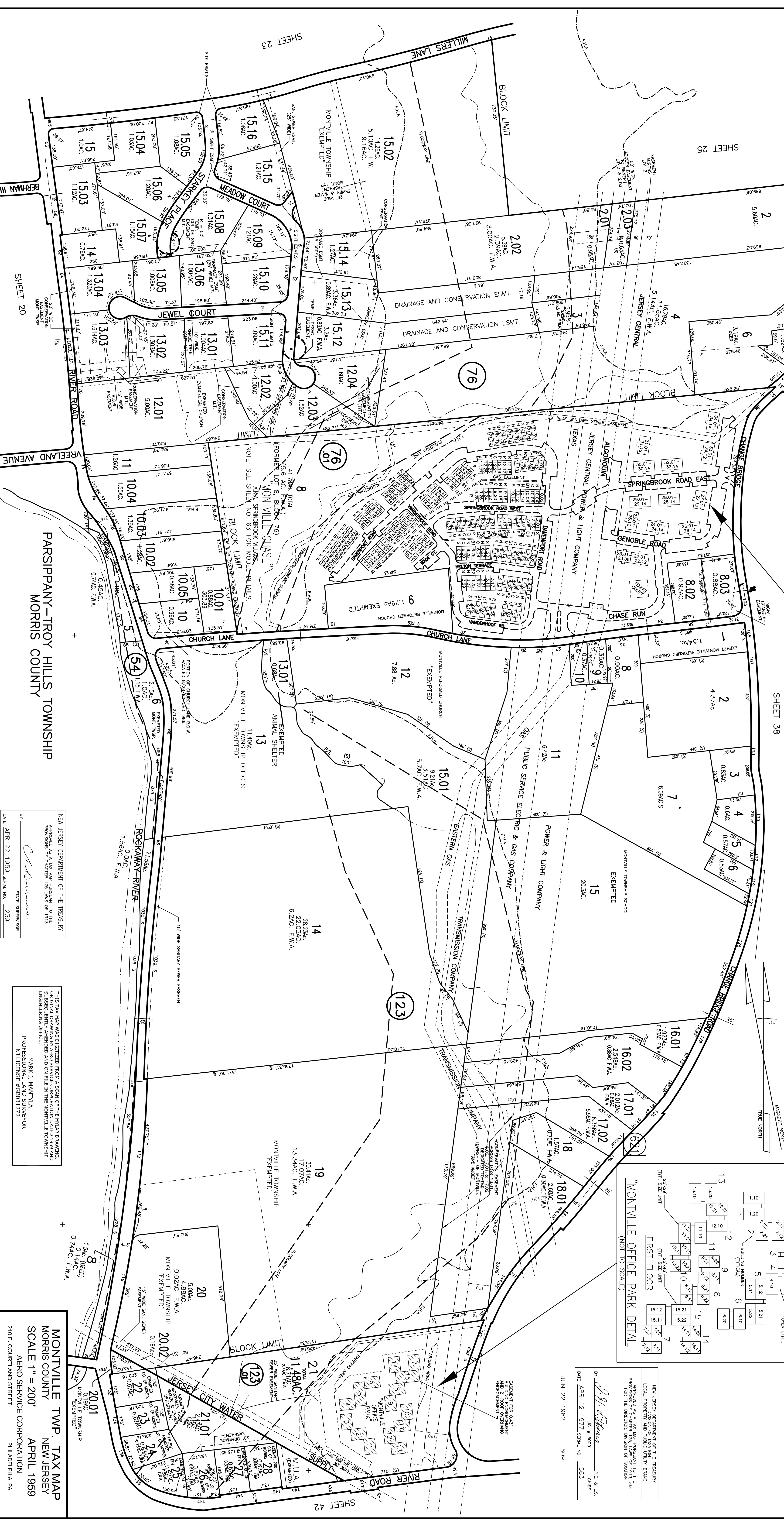


NEW JERSEY DEPARTMENT OF THE TREASURY  
 LOCAL PROPERTY AND PUBLIC UTILITY BRANCH  
 APPROVED AS A TAX MAP SUBJECT TO THE  
 PROVISIONS OF N.J.A.C. 17:27 AND N.J.A.C. 17:28  
 FOR THE DIRECTOR, DIVISION OF TAXATION, ETC.

DATE APR. 12, 1977, SERIAL NO. 563

JUN 22, 1992 609

BY: *Robert P. L. S.* P.E. & L.S.  
 DATE APR. 12, 1977, SERIAL NO. 563



REVIEWED/REVISED: 1988, 1987, 1986, 1989, 1991, 1992, 1993, 1994, 1995, 1997, 1998, 2000, 2003, 2005, 2008, 2011, 2014  
 PROFESSIONAL LAND SURVEYOR #31272  
 MONTVILLE TOWNSHIP ENGINEERING DEPT.  
 MONTVILLE, N.J. 07045

REVIEWED/REVISED: 1988, 1997, 1998, 1999, 2001, 2002, 2003, 2004, 2005, 2006, 2008, 2011, 2014  
 PROFESSIONAL LAND SURVEYOR #31272  
 MONTVILLE TOWNSHIP ENGINEERING DEPT.  
 MONTVILLE, N.J. 07045

NEW JERSEY DEPARTMENT OF THE TREASURY  
 APPROVED AS A TAX MAP SUBJECT TO THE  
 PROVISIONS OF N.J.A.C. 17:27 AND N.J.A.C. 17:28  
 FOR THE DIRECTOR, DIVISION OF TAXATION, ETC.

DATE APR. 22, 1992, SERIAL NO. 239

BY: *Robert P. L. S.* STATE SUPERVISOR

THIS TAX MAP WAS DIGITIZED FROM A SCAN OF THE ORIGINAL DRAWING.  
 ORIGINAL DRAWING BY: RANDY SERVICE CORPORATION DATED 1993 AND  
 1995. THE ORIGINAL DRAWING IS ON FILE IN THE MONTVILLE TOWNSHIP  
 ENGINEERING OFFICE.  
 MARK J. MANTYLA  
 PROFESSIONAL LAND SURVEYOR  
 NJ LICENSE #GB031272

REV: 1982 Warren R. Hamer  
 Professional Land Surveyor  
 Montville Township Engineering Dept.  
 Montville, N.J. 07045

REV: 1983, 1970, 1973, 1975, 1976, 1982 Stephen A. Jamnack  
 Professional Planner & Land Surveyor  
 Montville, N.J. 07045

**MONTVILLE TWP. TAX MAP**  
**MORRIS COUNTY**  
**SCALE 1" = 200'**  
**APRIL 1999**  
**AERO SERVICE CORPORATION**  
 PHILADELPHIA, PA.

**PARSIPPANY-TROY HILLS TOWNSHIP**  
**MORRIS COUNTY**