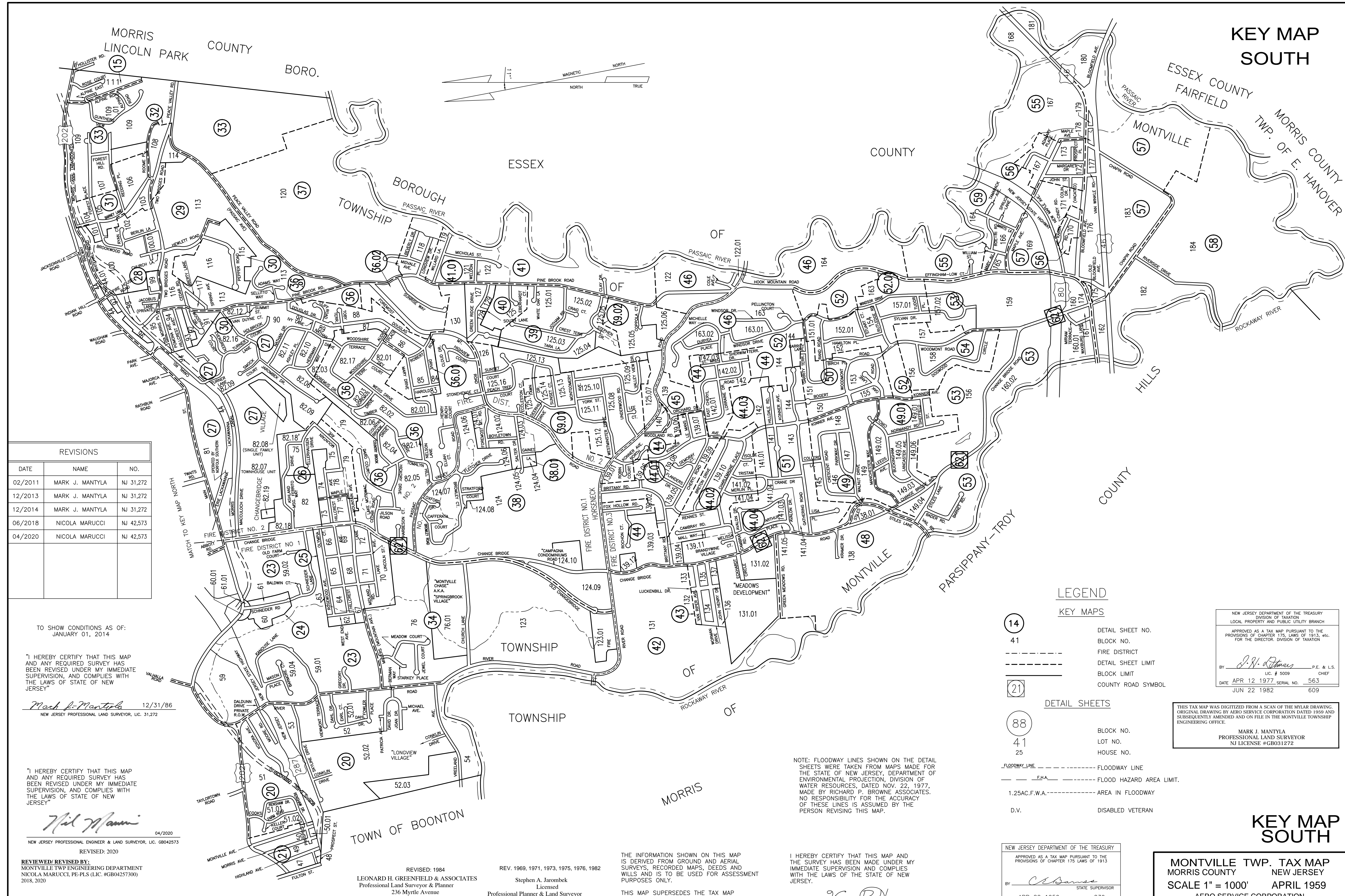


# KEY MAP SOUTH



REVISIONS		
DATE	NAME	NO.
02/2011	MARK J. MANTYLA	NJ 31,272
12/2013	MARK J. MANTYLA	NJ 31,272
12/2014	MARK J. MANTYLA	NJ 31,272
06/2018	NICOLA MARUCCI	NJ 42,573
04/2020	NICOLA MARUCCI	NJ 42,573

TO SHOW CONDITIONS AS OF:  
JANUARY 01, 2014

"I HEREBY CERTIFY THAT THIS MAP AND ANY REQUIRED SURVEY HAS BEEN REVISED UNDER MY IMMEDIATE SUPERVISION, AND COMPLIES WITH THE LAWS OF STATE OF NEW JERSEY"

*Mark J. Mantyla* 12/31/86  
NEW JERSEY PROFESSIONAL LAND SURVEYOR, LIC. 31,272

"I HEREBY CERTIFY THAT THIS MAP AND ANY REQUIRED SURVEY HAS BEEN REVISED UNDER MY IMMEDIATE SUPERVISION, AND COMPLIES WITH THE LAWS OF STATE OF NEW JERSEY"

*Nicola Marucci* 04/2020  
NEW JERSEY PROFESSIONAL ENGINEER & LAND SURVEYOR, LIC. 08042573

REVIEWED/REVISED BY:  
MONTVILLE TWP. ENGINEERING DEPARTMENT  
NICOLA MARUCCI, PE-PLS (LIC. #GB04257300)  
2018, 2020

REVISED: 1984  
LEONARD H. GREENFIELD & ASSOCIATES  
Professional Land Surveyor & Planner  
236 Myrtle Avenue  
Boonton, N.J. 07005

REV. 1969, 1971, 1973, 1975, 1976, 1982  
Stephen A. Jaromek  
Licensed  
Professional Planner & Land Surveyor  
Montville, N.J. 07045

THE INFORMATION SHOWN ON THIS MAP IS DERIVED FROM GROUND AND AERIAL SURVEYS, RECORDED MAPS, DEEDS AND WILLS AND IS TO BE USED FOR ASSESSMENT PURPOSES ONLY.  
THIS MAP SUPERSEDES THE TAX MAP APPROVED APRIL 12, 1977

I HEREBY CERTIFY THAT THIS MAP AND THE SURVEY HAS BEEN MADE UNDER MY IMMEDIATE SUPERVISION AND COMPLIES WITH THE LAWS OF THE STATE OF NEW JERSEY.  
*Yaron B. Harper*  
N.J. L.S.L.I.C. 23939

LEGEND	
KEY MAPS	
14	DETAIL SHEET NO.
41	BLOCK NO.
---	FIRE DISTRICT
---	DETAIL SHEET LIMIT
---	BLOCK LIMIT
---	COUNTY ROAD SYMBOL
DETAIL SHEETS	
88	BLOCK NO.
41	LOT NO.
25	HOUSE NO.
---	FLOODWAY LINE
---	FLOOD HAZARD AREA LIMIT
---	AREA IN FLOODWAY
D.V.	DISABLED VETERAN

NEW JERSEY DEPARTMENT OF THE TREASURY  
DIVISION OF TAXATION  
LOCAL PROPERTY AND PUBLIC UTILITY BRANCH  
APPROVED AS A TAX MAP PURSUANT TO THE PROVISIONS OF CHAPTER 175 LAWS OF 1913, AND SUBSEQUENTLY AMENDED AND ON FILE IN THE MONTVILLE TOWNSHIP ENGINEERING OFFICE.  
BY *J.W. [Signature]* P.E. & L.S. CHIEF  
LIC. # 5009  
DATE APR 12 1977 SERIAL NO. 563  
JUN 22 1982 609

THIS TAX MAP WAS DIGITIZED FROM A SCAN OF THE MYLAR DRAWING ORIGINAL DRAWING BY AERO SERVICE CORPORATION DATED 1959 AND SUBSEQUENTLY AMENDED AND ON FILE IN THE MONTVILLE TOWNSHIP ENGINEERING OFFICE.  
MARK J. MANTYLA  
PROFESSIONAL LAND SURVEYOR  
NJ LICENSE #GB031272

NEW JERSEY DEPARTMENT OF THE TREASURY  
APPROVED AS A TAX MAP PURSUANT TO THE PROVISIONS OF CHAPTER 175 LAWS OF 1913  
BY *[Signature]* STATE SUPERVISOR  
DATE APR 22 1959 SERIAL NO. 239

KEY MAP SOUTH  
MONTVILLE TWP. TAX MAP  
MONTVILLE COUNTY NEW JERSEY  
SCALE 1" = 1000' APRIL 1959  
AERO SERVICE CORPORATION  
210 E. COURTLAND STREET PHILADELPHIA, PA.